

Regional Update: June 2021 (#11 2020/21)

Introduction

Welcome to the eleventh Lancashire and West Yorkshire TSC update of 2020/21.

This newsletter provides essential system leader news, links and updates that have been issued this week.

Previous newsletters, attachments and other resources can be accessed at <https://greateheightstrust.org.uk/lwytsc>.

Amanda Bennett OBE - a.bennett@greetlandacademy.org.uk Angela Holdsworth - a.holdsworth@theviewtrust.org

Lancashire and West Yorkshire's representatives for the national TSC

supported by

Tessa Mason - tessa.mason@education.gov.uk, Gill Robinson OBE - gill-robinson@outlook.com,

and Baljit Birring - baljitzbirring@indigodiversity.co.uk

& sub-regional co-ordination teams led by: Cheryl Brindle, Michael Tonge, Jen Murphy and Liz Whetham

In this newsletter:

School Improvement and System Leadership:

- **Current School Improvement Offer**
- **Educational Recovery – Additional Funding**
- The Secretary of State's Speech to the CST Conference

Professional and Leadership Development:

- NPQ Reforms overview
- EEF Knowledge Mobilisation
- Maths Hubs Update (NCETM)

Initial Teacher Training, Recruitment & Retention & ECF:

- ECF - Schools' Registration

National Leaders of Governance:

- **CST & NGA Effective Governance Links**

E-References and attachments:

- [Minister Gibb's letter to schools regarding early Career Teachers registration](#)
- [Contact your local Teaching School Hub](#)

HEADLINES

Current School Improvement Offer

The DfE is offering support to local authority-maintained schools and academy trusts if the school or any school within a trust meets any of the following criteria:

- Entering the 2021 to 2022 academic year with two or more consecutive 'requires improvement' (RI) judgements.
- Receiving an Ofsted RI judgement during the 2021 to 2022 academic year.

If an RI school receives an improved judgement during the summer term, it will no longer be eligible for the offer. Should a school receive an improved judgement during the next academic year if support has begun it can continue.

Overview of the offer:

The offer focuses on matching eligible schools with system leaders from schools and trusts who can help leaders identify short-term improvement actions and priorities to ensure there is sustainable improvement capacity in the long-term.

LWY schools and trusts being offered this support can find out more by contacting their RDD relationship manager or the following LWY sub-regional contacts:

LWY Sub-Regions	LWY TSC SI Contact	Email
West Yorkshire Greater Manchester	Baljit Birring	baljitzbirring@indigodiversity.co.uk
Liverpool City Region & Warrington Blackpool, Blackburn with Darwen & Lancashire	Tessa Mason	tessa.mason@education.gov.uk

Educational Recovery – Additional Funding

The DfE has recently shared its £1.4bn education recovery plan: [02/06/21 DfE Press Release](#).

Key aspects of the recovery package recognise the vital importance of educator development from high-quality, evidence-based training for teachers and leaders. Minister Gibb has outlined the additional funding and policy enhancement measures in the [attached letter sent to all schools and academies during the week beginning June 14th 2021](#).

Important elements to note are:

- £69 million to extend the rollout of the Early Career Framework reforms for teacher training in the first two years after qualification. This includes extending funded time off timetable to second year teachers from this September – a year earlier than previously planned
- £184 million of new funding for middle and late-career national professional qualifications
- £153 million for training for early years staff to support the very youngest children’s learning and development. This will involve new programmes focusing on key areas such as speech and language
- the next stage will include a review of time spent in school and college and the impact this could have on helping children and young people to catch up

The following is emphasised:

The DfE aims to create a ‘world-class teacher development system, building from Initial Teacher Training, through to early career support, specialisation and on to school leadership. At each phase, teachers will have access to high-quality training and professional development, underpinned by the best available evidence. This will create a golden thread of support that teachers can draw on at every stage of their careers.’

More detailed information about these reforms is set out in [the DfE’s ‘Delivering World-Class Teacher Development’ document](#).

The backbone of the lead partners delivery of the ECF and NPQs will be the 87 Teaching School Hubs. Each Hub serves a designated area of the country, ensuring every school has easy access to support. The Hubs will offer high-quality, evidence-based training, and will work with the lead providers to deliver the Early Career Framework reforms and NPQs.

The easiest way to sign up to these programmes is to [contact your local Teaching School Hub](#).

School Improvement and System Leadership

The Secretary of State’s Speech to the Confederation of School Trusts - April 28th 2021

Summary main themes of [the full speech](#) for system leaders:

New guidance: The Secretary of State has outlined the government’s belief that strong trusts improve educational outcomes and its vision for every school to be part of a family of schools in a strong multi-academy trust.

- The government is looking at how to bring into the Trust sector schools which have received three RI judgments in a row
- Research will be undertaken into how to make the process of joining a Trust as easy as possible
- The Academies Financial Handbook will be updated to bring greater clarity to guidance
- Trust Capacity Fund: The DFE will release up to £24m over the 2021-22 financial year to help trusts grow

[More support for local areas to drive up school standards](#)

£10 million for intensive support has been announced for four areas of the country, to increase the proportion of pupils in good or outstanding schools. These areas are Plymouth, Ashfield & Mansfield, **South Sefton & North Liverpool** and North Durham & City where ‘there is high potential for rapid improvement’. The investment will help local schools join strong trusts and drive-up standards with the support of experienced school and trust leaders.

Up to half of the funding for the four areas will be channelled through the [Trust Capacity Fund](#), which opens for applications today from trusts looking to support more schools in those areas and across the country.

The Department is also providing £800,000 in setup funding towards a pilot of five new Catholic multi-academy trusts and two new Church of England trusts to provide more church schools the opportunity to join strong trusts across the country.

Professional and Leadership Development:

National Professional Qualifications Reforms (NPQs)

Summary of teacher and leader development underpinning the revised NPQ model - opportunities available later this term:

[Delivering World Class Teacher Development, June 2021](#)



- Teachers are the foundation of the education system – there are no great schools without great teachers. Delivering on the commitments set out in the [Teacher Recruitment and Retention Strategy](#), the Department is creating a world-class teacher development system by transforming the training and support teachers and school leaders receive at every stage of their career.
- Each stage – initial teacher training, early career support, specialisation and leadership – is underpinned by frameworks that build on and complement one another. The frameworks have been independently reviewed by the Education Endowment Foundation to ensure they draw on the best available evidence.
- Together these reforms will help teachers and leaders in every phase, subject and context. They will establish strong professional development cultures in schools across the country, elevating the quality of teaching and ultimately improving pupil outcomes.

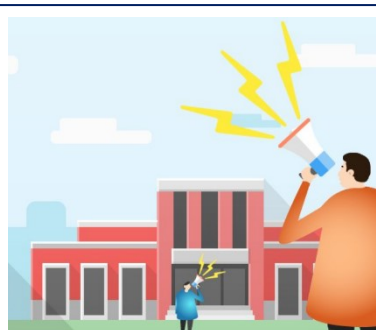


Delivering World-Class Teacher Development

June 2021

National professional qualifications (NPQs) reforms

Education Endowment Foundation Knowledge Mobilisation



Now recruiting!

The EEF is looking for schools to take part in trials of five high-potential projects:

Early Years:

[Maths Champions](#)

[Impact of Covid-19 on primary school starters](#)

[TEEM UP: Teaching Effective Early Mathematical Understanding in Primary Schools](#)

Key Stages 1 and 2: [Headsprout Early Reading in Special Schools](#)

Key Stage 3-5: [KEEP Teaching](#)

Supporting early language and communication development

The DfE has confirmed funding will be available to the Nuffield Foundation to deliver the Nuffield Early Language Intervention (NELI) for reception children in the academic year 2021/22. [Schools can register for the programme here.](#)

Assessment: Five ways to use diagnostic assessment in the maths classroom

"Diagnostic assessment strategies provide frequent, quick opportunities to reflect on pupils' thinking, strengths, and weaknesses: interpreted with skill, they can give useful insights into pupil learning and the next steps teachers should take."

Secondary school teacher and EEF maths specialist **Simon Cox** explains five ways practitioners can integrate diagnostic assessment into their practice. [Read more . . .](#)

Maths Hubs Update (NCETM)



Maths teaching news & updates from the NCETM



[Maths Hubs](#) are currently recruiting primary schools for a new large-scale national programme designed to ensure that pupils in Reception, Year 1 and Year 2 develop strong early 'number sense'. Participation in [Mastering Number](#) will provide schools with resources for daily maths teaching and involve high quality professional development for teachers.

[Online information/taster sessions](#) will take place over the next month for schools to learn more before applying. There are thousands of places nationally, but should the programme be oversubscribed, priority will be given to schools with the highest levels of disadvantage.

For secondary schools, a new programme to support non-specialists teaching maths, [Specialist Knowledge for Teaching Mathematics – Secondary Non-Specialists](#), is now recruiting. This project will focus on both subject knowledge and pedagogy for those teaching outside their specialism in secondary maths departments.

To learn more about all 30 national CPD projects available from the Maths Hubs Network, visit [What Maths Hubs are doing](#).

Expansion in Tutoring Support

[‘Huge expansion of tutoring in next step of education recovery’](#)

£1 billion for national tutoring revolution will see up to 100 million tutoring hours for children and young people across England to help them catch up on pandemic lost learning.

Main points:

- As part of the next step in the government's plans to boost education recovery, a total of £1.4 billion is being invested, including £1 billion to support up to 6 million, 15-hour tutoring courses for disadvantaged school children, as well as an expansion of the 16-19 tuition fund, targeting key subjects such as Maths and English.
- £400 million will help give early years practitioners and 500,000 teachers across the country training and support
- Schools and colleges will be funded to give some year 13 students the option to repeat their final year.

National Tutoring Programme: Places still available for this academic year

All state-maintained schools can still access subsidised tutoring through the National Tutoring Programme, to support pupils who need extra help. The NTP aims to ensure that high-quality tutoring is available in all parts of the country to disadvantaged pupils who need the most support to catch up. [NTP frequently asked questions](#).

Assistant headteacher, Matt Rutter, explains [why he'd recommend schools take up the tutoring offer](#).

[Schools can search for approved NTP Tuition Partners](#) and enquire directly with providers. This includes providers with expertise in both primary and secondary phases as well as special schools and AP settings.

You can watch a recording of the national school information webinar held on Wednesday 21 April [here](#) and access the presentation slides [here](#). More information is available on the [NTP website](#).

Initial Teacher Training, Recruitment & Retention & ECF:

ECF - Schools' Registration

[ECF Registration for all schools with ECTs – Click here](#)

Early Career Framework (ECF) schools need to register early career teachers during this half term:

1. From this September, all schools offering statutory induction will be expected to offer a two-year induction to their early career teachers based on the Early Career Framework, where all new teachers receive at least three years of high-quality training at the start of their careers.
2. The simplest option, for schools, is to use a DfE funded training provider who will design and deliver a comprehensive programme of face-to-face and online training.
3. Lead providers of the ECF will be inspected by Ofsted so that this training will remain high-quality and the support will be fully funded so there are no costs for schools. Some schools may choose to develop their own induction programmes based on materials accredited by the DfE or design a programme from scratch based on the ECF.

National Leaders of Governance

Confederation of School Trusts - Effective Governance Links

[The CST Trust Journal](#): the CST Journal has thoughtful reflections, practical advice and professional insight – all of which will help governors and trustees to reach worthwhile outcomes on behalf of young people – [latest edition](#).

[‘An Overview of Current Reforms - and the Case for Unprecedented Collaboration and New Forms of Leadership’](#)

National Governance Association - Effective Governance Links

[20/05/21: The DfE announced its intention on to award the National Governance Association \(NGA\) the contract to deliver the reformed National Leaders of Governance \(NLG\) programme](#). NLGs recruited through the new programme will begin providing targeted support in October 2021. The NGA will recruit, train and deploy a high calibre team of experts to deliver reviews of governance for school and trust improvement.

In its announcement, the DfE recognised the important voluntary work that all governors and trustees undertake and thanked existing NLGs for the time and support they have offered to schools and trusts.

[NGA: Welcome to Governance - new edition now available of Welcome to Governance](#) which contains everything new governors, trustees and academy committee members need to know about their roles. New governors/trustees of NGA GOLD governing boards/GOLD academy boards will receive a complimentary copy as part of their membership and do not need to place an order. Account holders, chairs and clerks will need to check that board details are up to date in your NGA [membership account](#) so that your new governors/trustees can receive their complimentary copy.



The [Teaching School Council \(TSC\)](#) is a national body representing all Teaching Schools in England. The Council is made up of membership with either a national or regional remit, who direct or shape the work of Teaching Schools through discussion with government ministers and senior officials. The Teaching Schools Council believes that **every child is entitled to be in a great school**.